

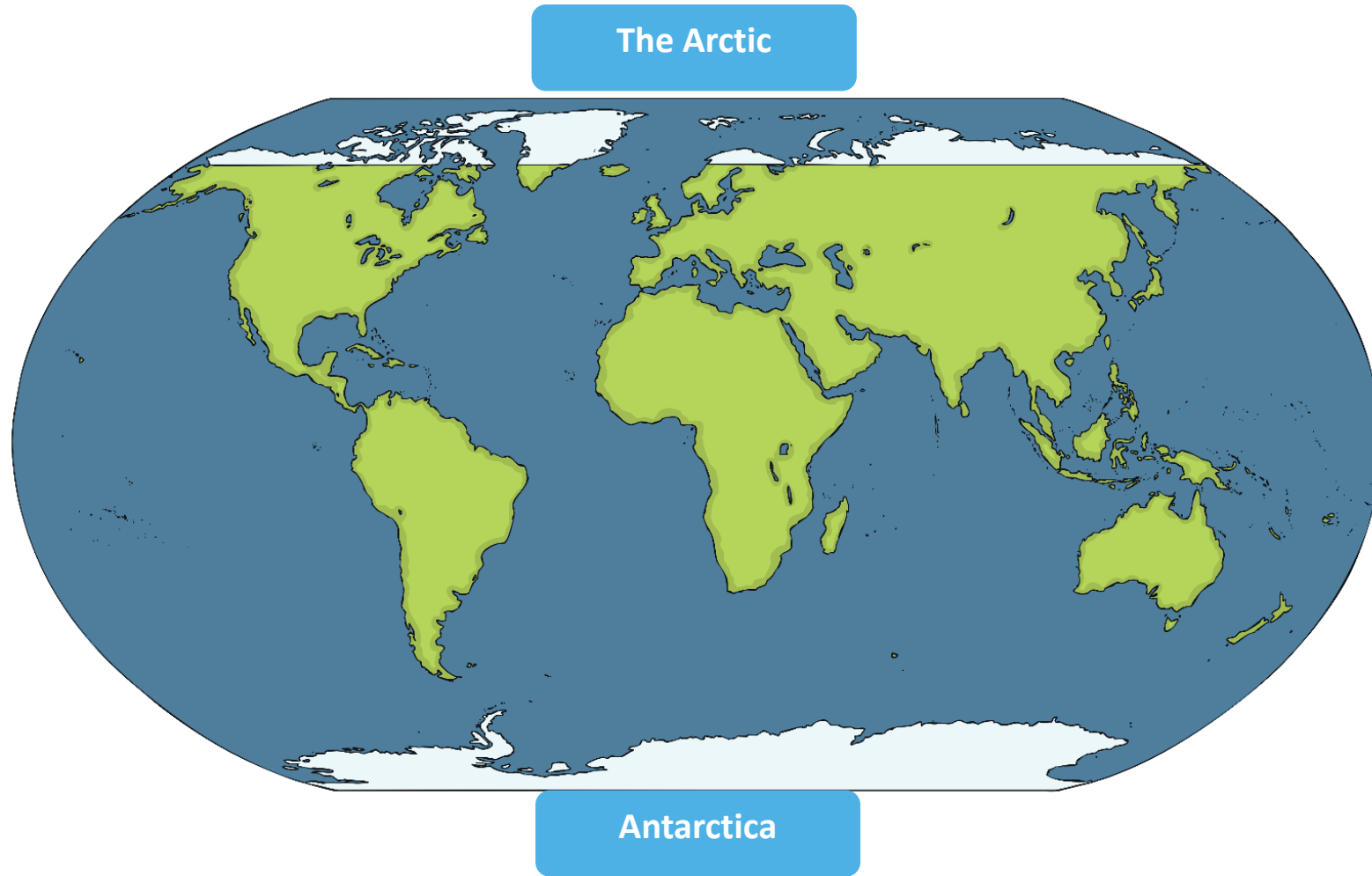
Why are the polar  
regions so cold?

Have a look!

Take a look at  
this picture.  
What can you  
see? What  
animals can  
you see?



# The polar regions



The polar regions include The Arctic and Antarctica.

The map shows where each of these places are in the world.

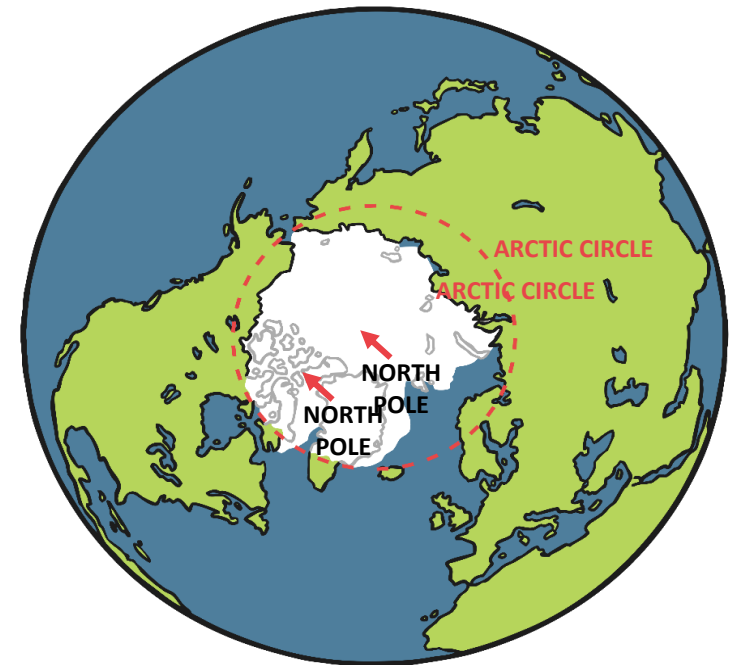
# The Arctic

The arctic is placed at the very top of the world and it includes areas around the North Pole.

The arctic isn't a country or a continent, as it is mostly frozen ocean.

The arctic has very cold and dark winters and can last for 8 months.

This is because it is far away from the sun.

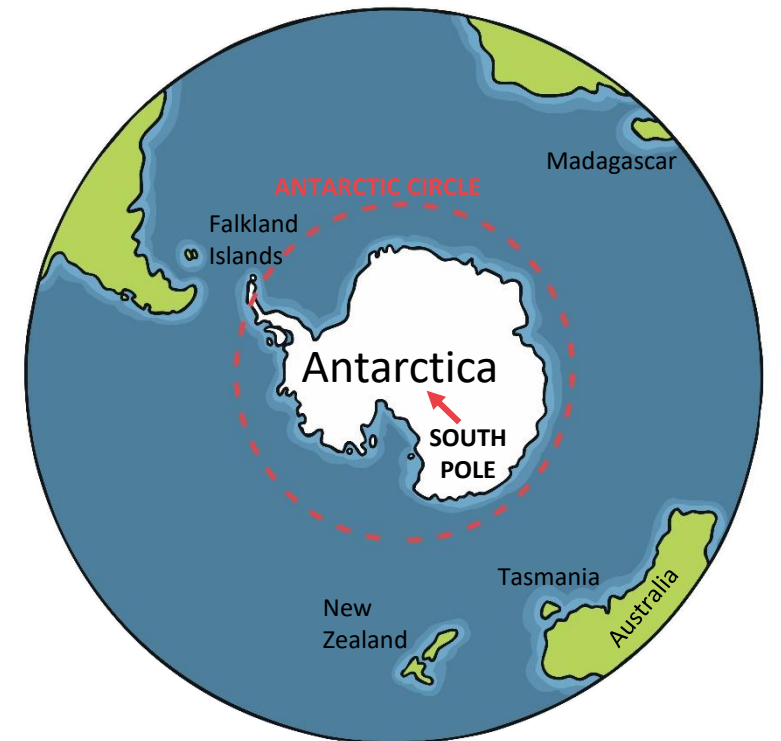


# Antarctica

Antarctica is based at the bottom of the planet. It includes areas around the South pole.

Antarctica is a continent, as it is an area of land, covered in ice.

Antarctica is the coldest and windiest place on earth.  
The winter in Antarctica can also last for 8 months.



# The equator

In order for us to be able to answer our learning question, we need to know some facts about the earth.

Our planet has something special, this is called the Equator. The equator is an imaginary line which runs around the earth. The equator is half way between the Arctic and the Antarctic.

Countries near the equator are hot for most of the year. But why?



# The equator

The countries which are closest to the equator, like parts of Africa and South America, are the hottest places on earth, and stay hot for most of the year.

This is because of the sun.

Watch this video to find out more.

<https://www.youtube.com/watch?v=Wg-pFtvsvmo>

# The equator

The equator is the closest part to the sun, which is why those countries are always hot.

The Arctic and the Antarctic are the furthest from the equator and the sun, meaning that they are the coldest places on earth.

Here we can see the sun hitting the equator, making it so hot, but the sun never reaches the Arctic and the Antarctic, which is why they are always so cold.





# Your task

Your task is to complete the activity sheet. Label the polar regions, and draw on the map where the equator goes around the earth.

You are then going to be writing some sentences about why the polar regions are so cold.

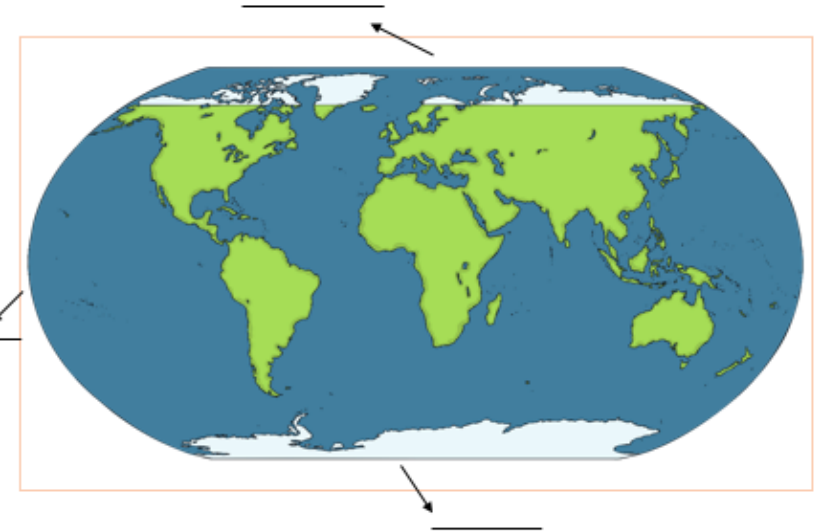
Use the PowerPoint and the video to help you.

Hint: Use the facts and your own knowledge of the equator and the climate of the polar regions to help you.

## Why are polar regions so cold?

On the map, label the Arctic (North Pole) and Antarctica (South Pole).

Using a colored pencil and a ruler, draw the equator line where you think it should go.



Write some sentences that explain why the Arctic and the Antarctic (Polar regions) are so cold, use your knowledge of the equator to help you answer.

The polar regions are so cold because

---

---

---

---

---

---

---

---