


Tuesday 9th February 2021

LO: To plan my writing.

Tuesday 9th February 2021

LO: To plan my writing.



What is a poem?

Tuesday 9th February 2021

LO: To plan my writing.

stanzas

repetition

rhythm

feelings

rhyme

What is a poem?

pattern

Uses imagery
to create a
picture in
your mind

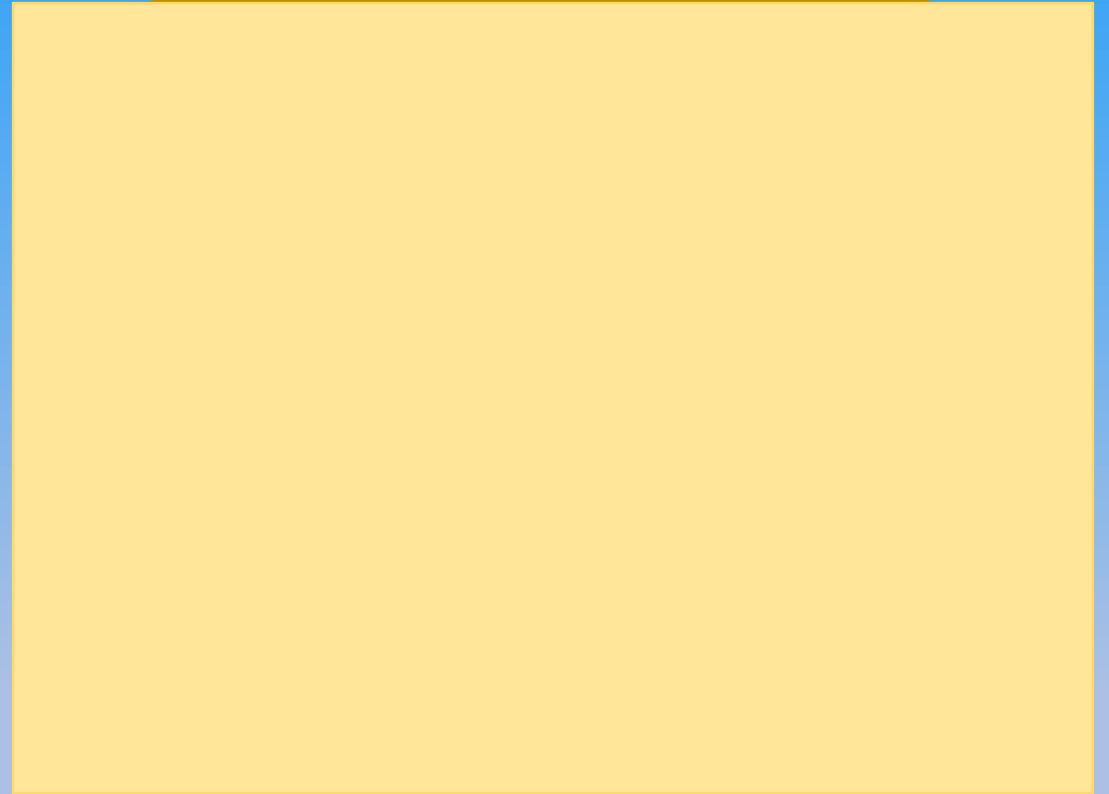
ideas

organised in different ways

Tuesday 9th February 2021

LO: To plan my writing.

A poem is a piece of writing that expresses feelings and / or ideas and is written in a special way such as with rhythm, rhyme, a pattern or using lots of imagery.



Tuesday 9th February 2021

LO: To plan my writing.

A poem is a piece of writing that expresses feelings and / or ideas and is written in a special way such as with rhythm, rhyme, a pattern or using lots of imagery.

Acrostic poem

The first letter of each line in an acrostic poem spells out a word.

Tuesday 9th February 2021

LO: To plan my writing.

Yesterday we looked at four different animal poems and discussed their features.

What can you remember?



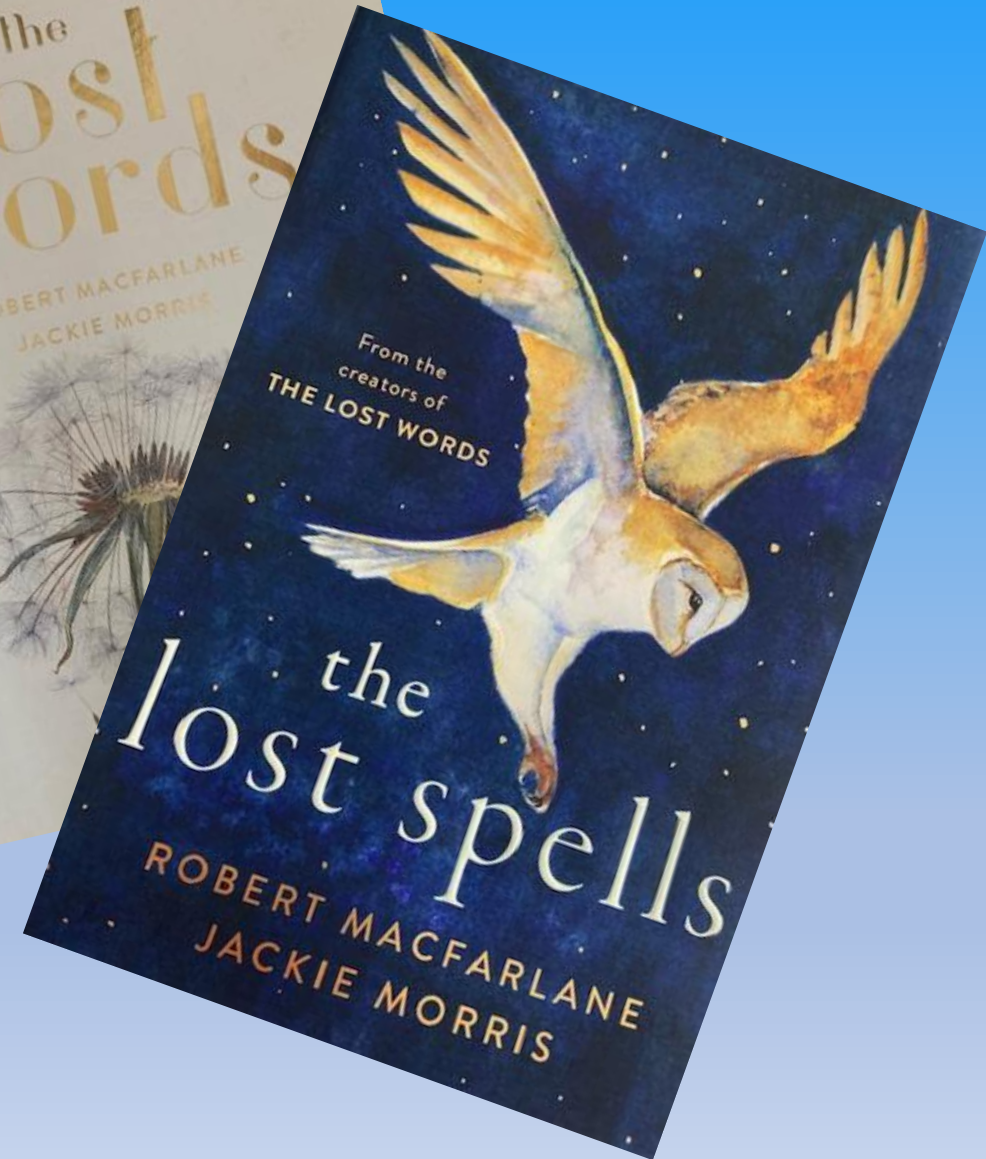
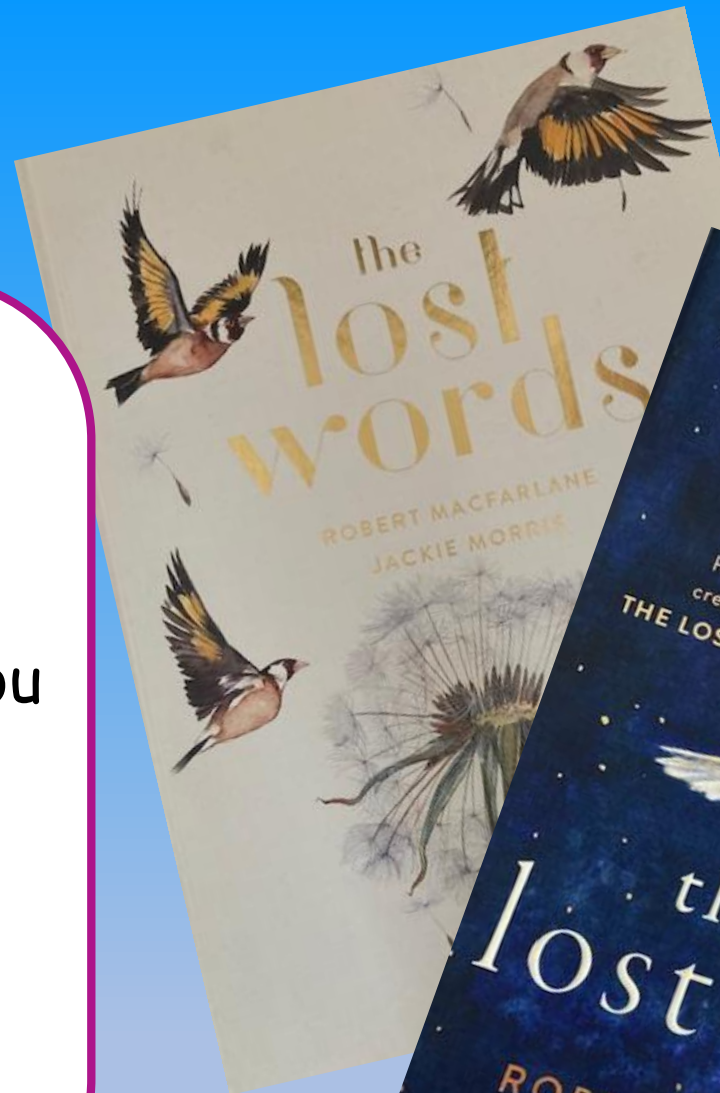
Tuesday 9th February 2021

LO: To plan my writing.

Let's look at one more together .

As I read it, put your hand up if you notice something interesting.

It may be a pattern, repetition, rhyme or some interesting vocabulary.



magpie

magpie

Magpie Manifesto:

Argue Every Toss!

Gossip, Bicker, Yak and Snicker All Day Long!

Pick a Fight in an Empty Room!

Interrupt, Interject, Intercept, Intervene!

Every Magpie for Every Magpie against
Every Other Walking Flying Swimming
Creeping Creature on the Earth!*

*Except eagles, for they are too scary...



Tuesday 9th February 2021
LO: To plan my writing.

The **Magpie** poem focuses particularly on sound because magpies are so noisy!

Can you remember what the other animal poems that we have read described?



Tuesday 9th February 2021
LO: To plan my writing.

The **Magpie** poem focuses particularly on sound because magpies are so noisy!

Can you remember what the other animal poems that we have read described?

appearance

movement

Sound

habitat (where it lives)



Tuesday 9th February 2021
LO: To plan my writing.

Tuesday 9th February 2021

LO: To plan my writing.

Today you are going to plan your own animal poems about animals from the Metal Ages!

Can you remember some animals that lived in the Metal Ages?



Tuesday 9th February 2021

LO: To plan my writing.

Metal Age Animals

Cave painting, metal and bone carvings and archeological digs, teach us about the kind of animals that were in Britain in the Metal Ages.

Metal Age animals:

woolly mammoths, cave lions, cave bears, cave hyenas, reindeer, woolly rhinoceros, wolves, saber-tooth tigers



Tuesday 9th February 2021

LO: To plan my writing.

Today you are going to choose one Metal Ages animal and complete your planning sheet about them. On the website there is information about **wolves** and **woolly mammoths**.

You are welcome to choose a different animal to research yourself if you would like.

Together we will practice completing a planning sheet for a wolf to help you with your ideas.

The Metal Ages animal I have chosen is: _____

Write adjectives, verbs, adverbs and similes in your plan to describe how your animal looks and moves, what sound it makes and where it lives.

what does your animal look like?	
How does your animal move?	
What sound does your animal make?	
Where does your animal live?	
© Can you add any more interesting details about your animal?	

Wolf Facts

- Wolves are hunters. They run at incredible speeds to chase their prey.
- Wolves can live in warm and arctic environments.
- Wolves howl to communicate and to scare others away.
- Wolves live in packs of six or 8.
- Wolves' howls are nocturnal and hunt at night.
- In the Metal Ages, people had begun to keep wolves as pets.



Tuesday 9th February 2021

LO: To plan my writing.

The Metal Ages animal I have chosen is: a wolf

Write adjectives, verbs, adverbs and similes in your plan to describe how your animal looks and moves, what sound it makes and where it lives.

what does your animal look like?	
----------------------------------	--

Tuesday 9th February 2021

LO: To plan my writing.



The Metal Ages animal I have chosen is: a wolf

Write adjectives, verbs, adverbs and similes in your plan to describe how your animal looks and moves, what sound it makes and where it lives.

Adjectives and similes

what does your animal look like?	
----------------------------------	--

Tuesday 9th February 2021

LO: To plan my writing.



The Metal Ages animal I have chosen is: a wolf

Write adjectives, verbs, adverbs and similes in your plan to describe how your animal looks and moves, what sound it makes and where it lives.

Adjectives and similes

what does your animal look like?	shiny black nose, as fierce as a tiger	cold, glaring eyes silver and amber fur
----------------------------------	---	--

Tuesday 9th February 2021

LO: To plan my writing.

Wolf Facts

- Wolves are hunters. They run at incredible speeds to chase their prey.
- Wolves can live in warm and arctic environments.
- Wolves howl to communicate and to scare others away.
- Wolves live in packs of six or 8.
- Wolves' howls are nocturnal and hunt at night.
- In the Metal Ages, people had begun to keep wolves as pets.



Adjectives, similes, verbs (doing words) and adverbs (ly words that describe a verb)

How does your animal move?	
----------------------------	--

<https://www.youtube.com/watch?v=cvbqTcM3mcQ>

Tuesday 9th February 2021

LO: To plan my writing.

Wolf Facts

- Wolves are hunters. They run at incredible speeds to chase their prey.
- Wolves can live in warm and arctic environments.
- Wolves howl to communicate and to scare others away.
- Wolves live in packs of six or 8.
- Wolves' howls are nocturnal and hunt at night.
- In the Metal Ages, people had begun to keep wolves as pets.



Adjectives, similes, verbs (doing words) and adverbs (ly words that describe a verb)

How does your animal move?	races quickly, stalks creepily As fast as a rocket, powerful, fearsome Lightning-quick
----------------------------	--

<https://www.youtube.com/watch?v=cvbqTcM3mcQ>

Tuesday 9th February 2021

LO: To plan my writing.

Wolf Facts

- Wolves are hunters. They run at incredible speeds to chase their prey.
- Wolves can live in warm and arctic environments.
- Wolves howl to communicate and to scare others away.
- Wolves live in packs of six or 8.
- Wolves' howls are nocturnal and hunt at night.
- In the Metal Ages, people had begun to keep wolves as pets.



Adjectives, similes, verbs (doing words) and adverbs (ly words that describe a verb)

What sound does your animal make?	
-----------------------------------	--

<https://www.youtube.com/watch?v=5laYm3NjJnM>

Tuesday 9th February 2021

LO: To plan my writing.

Wolf Facts

- Wolves are hunters. They run at incredible speeds to chase their prey.
- Wolves can live in warm and arctic environments.
- Wolves howl to communicate and to scare others away.
- Wolves live in packs of six or 8.
- Wolves' howls are nocturnal and hunt at night.
- In the Metal Ages, people had begun to keep wolves as pets.



Adjectives, similes, verbs (doing words) and adverbs (ly words that describe a verb)

What sound does your animal make?	loud, ear splitting, long howling mournfully, creaking and squeaking as loud as a foghorn
-----------------------------------	---

<https://www.youtube.com/watch?v=5laYm3NjJnM>

Tuesday 9th February 2021

LO: To plan my writing.

Wolf Facts

- Wolves are hunters. They run at incredible speeds to chase their prey.
- Wolves can live in warm and arctic environments.
- Wolves howl to communicate and to scare others away.
- Wolves live in packs of six or 8.
- Wolves' howls are nocturnal and hunt at night.
- In the Metal Ages, people had begun to keep wolves as pets.



Adjectives and similes

Where does your animal live?	
------------------------------	--

Tuesday 9th February 2021

LO: To plan my writing.

Wolf Facts

- Wolves are hunters. They run at incredible speeds to chase their prey.
- Wolves can live in warm and arctic environments.
- Wolves howl to communicate and to scare others away.
- Wolves live in packs of six or 8.
- Wolves' howls are nocturnal and hunt at night.
- In the Metal Ages, people had begun to keep wolves as pets.



Adjectives and similes

Where does your animal live?	hot, sandy desert	freezing, ice-white snow
	as cold as ice water	

Tuesday 9th February 2021

LO: To plan my writing.

Wolf Facts

- Wolves are hunters. They run at incredible speeds to chase their prey.
- Wolves can live in warm and arctic environments.
- Wolves howl to communicate and to scare others away.
- Wolves live in packs of six or 8.
- Wolves' howls are nocturnal and hunt at night.
- In the Metal Ages, people had begun to keep wolves as pets.



Adjectives, similes, verbs (doing words) and adverbs (ly words that describe a verb)

© Can you add any more interesting details about your animal?	
---	--

Now choose one Metal Ages animal and complete your planning sheet about them. On the website there is information about **wolves** and **woolly mammoths**.

You are welcome to choose a different animal to research yourself if you would like.

Wolf Facts

- Wolves are hunters. They run at incredible speeds to chase their prey.
- Wolves can live in warm and arctic environments.
- Wolves howl to communicate and to scare others away.
- Wolves live in packs of six or 8.
- Wolves' howls are nocturnal and hunt at night.
- In the Metal Ages, people had begun to keep wolves as pets.



Woolly Mammoth Facts

- Woolly mammoths slowly roamed the earth in the Stone and Metal Ages. They could also charge thunderously.
- Woolly mammoths were the same size as African elephants but they had much smaller ears!
- Woolly mammoths liked to live in very cold climates due to their long, woolly hair.
- Woolly mammoths had very long, hard, ivory tusks.
- Scientists believe that woolly mammoths may have sounded like elephants by trumpeting with their trunks. They may also have been able to make grumbling sounds with their stomachs.
- Woolly mammoths were herbivores and ate huge amounts of grass and leaves.



The Metal Ages animal I have chosen is: _____

Write adjectives, verbs, adverbs and similes in your plan to describe how your animal looks and moves, what sound it makes and where it lives.

what does your animal look like?	
How does your animal move?	
What sound does your animal make?	
Where does your animal live?	
© Can you add any more interesting details about your animal?	